



HiTEMA[®]

international



**sustainability driven
by innovation**

COMPANY-PROFILE
ADV-MARK-CP-HI22-REV.00

Welcome to

HiTEMA[®]
international **RENT**

A member of HiTEMA[®] Group

Making **Glorious**
Equipment with **Passion**
for over 32 years.
Maurizio Burba



OUR NUMBERS

32 YEARS OF EXPERIENCE

8 PRODUCTION PLANTS

1850 UNITS PER YEAR

30 RANGES OF PRODUCTS

4 SELECTION TOOLS

18.750 sqm INDOOR SPACE

50 COUNTRIES WORLDWIDE

100% ITALIAN MANUFACTURE

90% EXPORT WORLDWIDE

ABOUT US

HITEMA® INTERNATIONAL is a specialist manufacturer with over 32 years of experience in the design and production of customized **Chillers** and **Heat Pumps** for process cooling and industrial comfort applications.

FUTURE ORIENTED

HITEMA® INTERNATIONAL has expanded its Chiller portfolio with a new Series not only using eco-friendly refrigerants such as HFO R1234ze, but also with **low GWP** alternatives like R513A, R32, R454B, R449A and the natural fluid PROPANE (R290), also developing the new **TURBOCOR** Series with **Freecooling**.

OUR VISION


Our focus is keeping our Customers running 100% of the time.

Our goal is to satisfy the Customers, by offering efficient and reliable solutions.

The keywords that better describe us are **customization**, efficiency, reliability and **sustainability**.

OUR GOAL? ALWAYS PROVIDE A BETTER SERVICE



HITEMA®
CUSTOMIZED 
ATEX CHILLER II
2G Ex h IIB T3 Gb
-20°C < T.amb <
40°C



HITEMA®
CUSTOMIZED
 ATEX CHILLER
II 3G Ex h IIB T3 Gc
-5°C < T.amb < 60°C
(Available also with IIC
T3 configuration)

OUR KEYWORDS

- Hitema® has over 32 years of experience in the production of **Customized Chillers and Heat Pumps**.
- We have developed **Advanced High/Low water Temperature Solutions**.
- We provide high efficiency **FreeCooling Solutions**.
- All our solutions are **Highly Tailorable**.
- We have developed Innovative **Eco-Friendly Refrigerants Solutions**.
- Hitema® manufactures all of its own **metal work** so that the cabinets are fully customisable.
- Our **re-enforced** Chillers mainframes are industry leading
- High quality, **reliability** and experience.
- Our Goal: **continuous improvement** of our products and services to always give our Customers a better service.
- **Future-oriented** market vision.
- We **test** all our machines with water ranging from + 20 °C to -25 °C

OUR CERTIFICATIONS



PORTABLE CHILLERS

Advanced Thermal Management



ENR.003 ÷ ENR.006

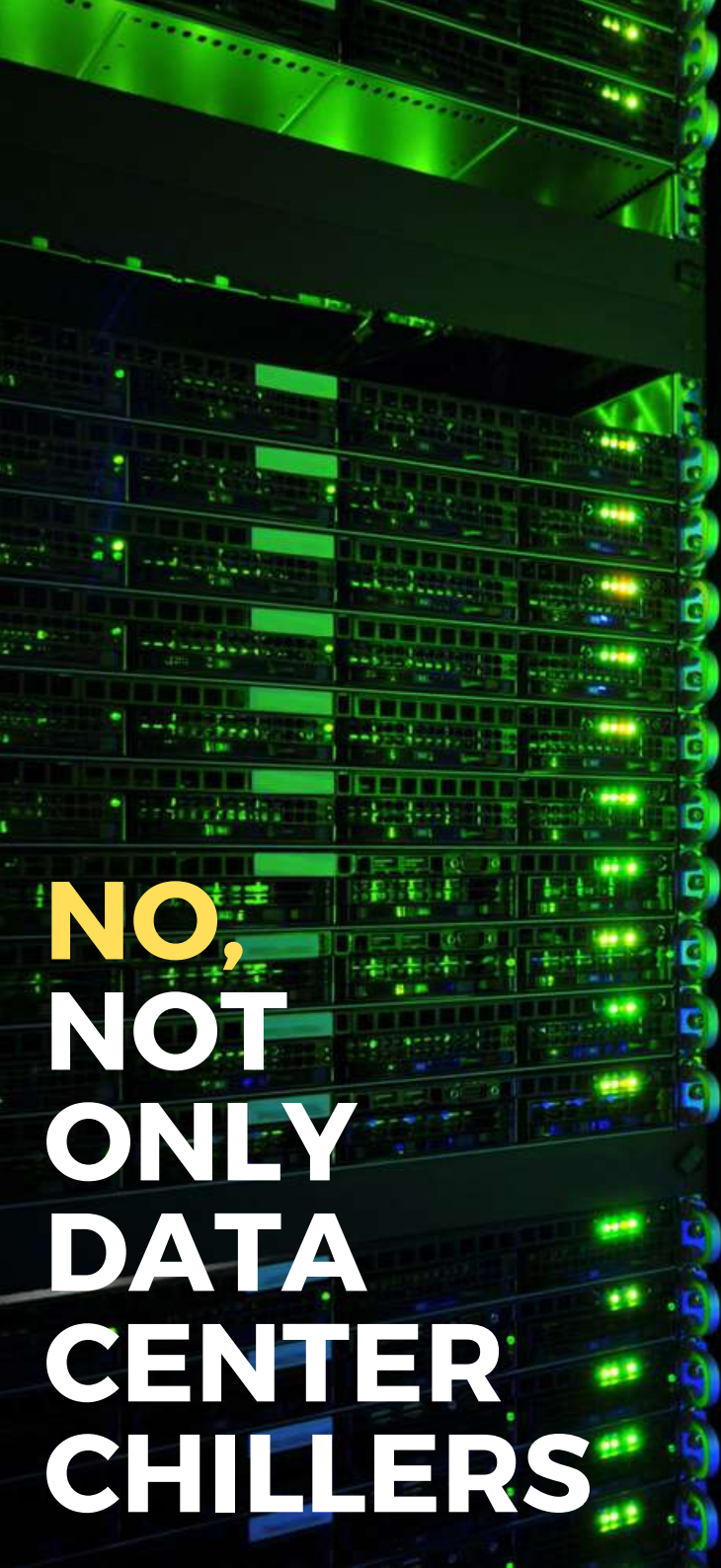
Economic savings
of 19%
on the purchase cost

STANDARD FEATURES:

- Digital Microprocessor;
- Remote Start/Stop input;
- High Efficiency Evaporator in Stainless Steel;
- Thermal Storage reservoirs in Stainless Steel, with fill, drain & vent parts;
- Water By-pass Kit;
- Water Level Indicator;
- Eco – Friendly Refrigerants;
- Water Gauge;
- Small Footprint;
- Ecodesign compliant with REGULATION 2016/2281.

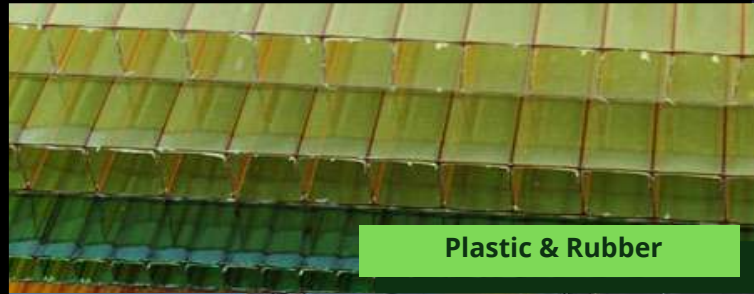
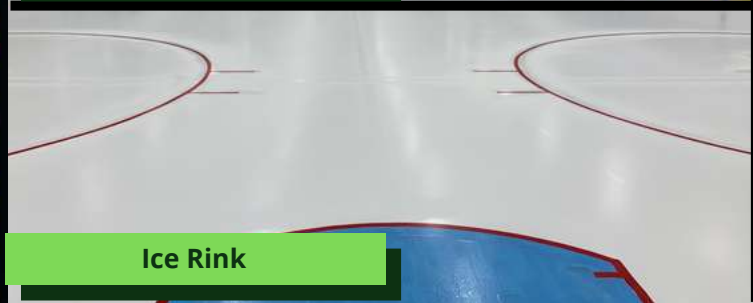
AVAILABLE OPTIONS:

- High pressure pump P5;
- Close Temperature Control;
- Stainless Steel Cabinet;
- High/Low pressure gauges
- Cleanable Metal Condenser Air filters



**NO,
NOT
ONLY
DATA
CENTER
CHILLERS**

**HITEMA®
APPLICATIONS**



Chemical & Pharmaceutical

Food & Beverage packaging

Wineries and Breweries

Machine Tools

Food Processing

Agriculture & Farming

Data Center Technology

Automotive

Plastic & Rubber

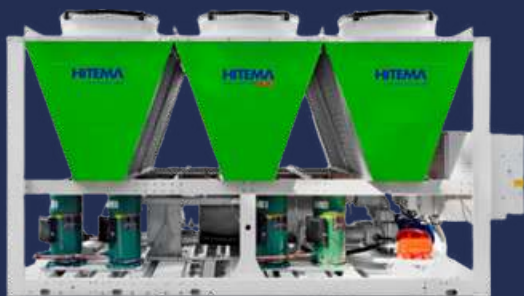
Ice Rink

**AND MANY
MORE**

REFRIGERATION SOLUTIONS

WITH OVER 30 YEARS OF EXPERIENCE WORLDWIDE

SCROLL LOW GWP OFFER



MAIN FEATURES:

- Digital Parametric Microprocessor Controller;
- Protection Rating IP54/NEMA 3R;
- BMS connectivity;
- Closed Integrated Hydraulic Circuit Included: double high efficiency plate evaporator, pump, flow switch, expansion tank, inertial tank in stainless steel with fill, drain & vent parts;
- R454B Eco – Friendly Refrigerants (GWP 466);
- High/Low pressure Gauges;
- Water Gauge;
- Small Footprint;
- Ecodesign compliant with [REGULATION 2016/2281](#);
- Safety Class A2L.

SCREW LOW GWP OFFER



MAIN FEATURES:

- Intelligent Controls Optimize Energy;
- Air to Liquid Free Cooling Coils;
- Intelligent Variable Load Control (VSD);
- Optimized Hybrid Cooling System;
- 2 Years Payback Time for 1 MW Cooling Unit;
- Quick Start / Fast Rump Function achieves full load after a power loss in few minutes;
- Back to Back Configuration;
- Eco – Friendly Refrigerants R 1234ze (GWP=3);
- Small Footprint;
- Safety Class A2L;
- E-coating condenser.

HYDROMODULE SOLUTIONS



MAIN FEATURES:

HITEMA HYDRO-MODULE series, consists of water storage tank in carbon steel, open frame if only tank/closed frame in galvanized and painted steel if with single/double pump, expansion vessel, automatic filling valve, automatic air vent.

TYPE OF AVAILABLE CONFIGURATION FOR PUMPS:

- **WP** =Single pump P3 with nominal pressure head 3 barg;
- **DP** =Double pump P3 with nominal pressure head 3 barg;
- **PH** =Single pump P5 with nominal pressure head 5 barg;
- **DPH** =Double pump P5 with nominal pressure head 5 barg.

ICE RINK CHILLERS



MAIN FEATURES:

- Digital Parametric Microprocessor Controller;
- Protection Rating IP54/NEMA 3R;
- High Efficiency Plate Evaporator in stainless steel;
- BMS connectivity;
- Integrated Hydraulic Circuit Included: pumps, flow switch, expansion tank in stainless steel, inertial tank with fill, drain & vent parts;
- Liquid Injection Scroll Compressors for Low Temperature Application : -30°C/-22°F;
- Eco – Friendly Refrigerants – R449A;
- High/Low pressure Gauges;
- Small Footprint;
- Ecodesign compliant with [REGULATION 2015/1095](#).

Discover Hitema®
customized Applications

- Medical Chillers
- HVAC Chillers
- Data Center Chillers
- Pharmaceutical Solutions
- Explosion-Proof Chillers
- Winery Chillers & Heat-Pumps
- Meat Processing Chillers
- Digital Printing Chillers
- Hydraulic Cooling Solutions
- Welding Machines Chillers
- Laser Processing Chillers
- Metal Finishing Chillers
- Food Processing Chillers
- Chemical Processing Chillers

Available Options:
Total customization

HITEMA®
international

HOW TO DESCRIBE HITEMA®

USING 3 WORDS

32 Years of Experience driven by Innovation

CUSTOMIZATION

At Hitema® we pride ourselves on being able to **manufacture and tailor our equipment** to your needs.

We are able to offer to our Customers a complete range of possibilities of customization, starting from the mainframe of the machines, to the colour and the refrigerants, as well as all the special requirements upon customers/projects demands.

Our **highly flexible manufacturing attitude** combined with our unique ability to build to order, sets us apart from any other company in our industry.

During the last years Hitema® has invested in new facilities, new technologies, new people over **20%** of the turnover.

TRUST

We are truly a **trusted Partner** for all our Customers.

From our small beginnings nearly 32 years ago we have grown into a Company that sells worldwide.

Our reputation is based on reliability and quality of all our products.

Our dedicated **After Sales Department** ensure that our Customers are looked after for years to come, whether its technical advice or spare parts we are there for you.

The Technical Department manages the after-sales & spare parts service for all the units: every single request received by the Hitema® International Team is recorded and logged in a "Diary" to improve our products and procedures and to constantly measure customer satisfaction.

CONTINUOUS IMPROVEMENT

Hitema® is absolutely committed to **continuous improvement**.

This forward thinking mentality is behind all our design philosophies.

This is really the key concept of Hitema® International work philosophy.

Continuous improvement allows us to always have a future-oriented approach, and to always give a better service to our Customers.

Innovation is only achievable through knowledge of the past; this enables us to ensure that all our future designs are ground breaking in the industry with the knowledge that they are 100% reliable.

"The "Thermometer" of our success is the satisfaction of our customers".

DISCOVER HITEMA® CUSTOMIZED APPLICATIONS

choose your customized configuration



ENR/ENRF SERIES

1,6kW ÷ 440kW

CSE SERIES

30kW ÷ 377kW

CFT SERIES

7,9kW ÷ 410kW

ENR-IR SERIES

8kW ÷ 200kW

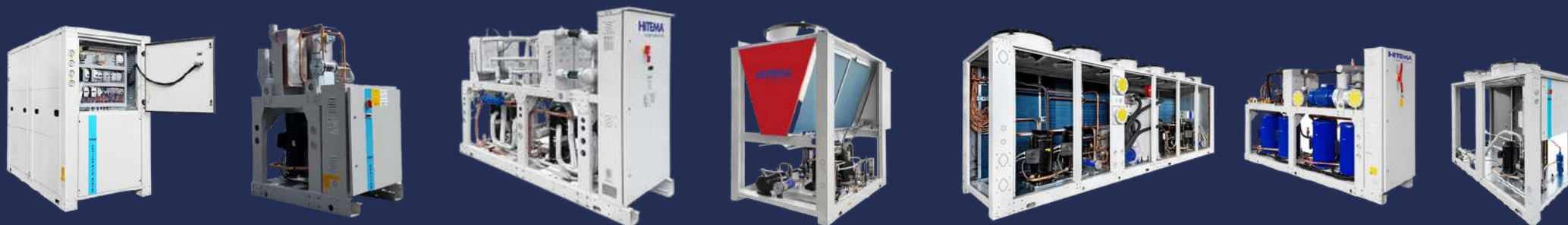
ENRC SERIES

7,4kW ÷ 375kW

HNR SERIES

14kW ÷ 95kW
15kW ÷ 104kW

UNTIL 400KW



ENW SERIES

3,8kW ÷ 424kW

CFTW SERIES

50kW ÷ 371kW

HFTW SERIES

100kW ÷ 400kW
80kW ÷ 370kW

SBS-HP SERIES

61,2kW - 81,4kW -
105,8kW

HFT SERIES

16kW ÷ 345kW

CFTC SERIES

50kW ÷ 370kW

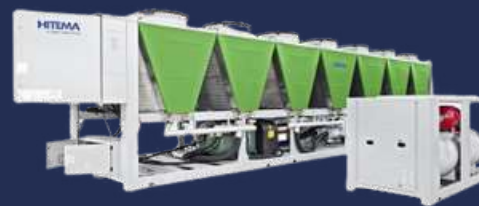
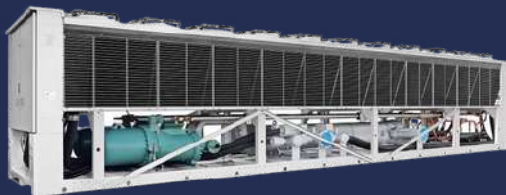
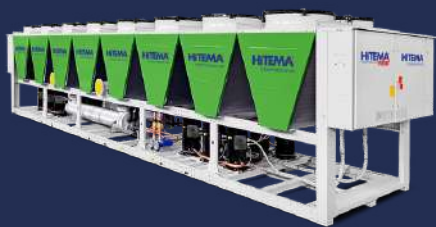
MTC SERIES

8kW ÷ 430kW

AVAILABLE TOOLS: price list - configurator - selection software

CUSTOMIZED FOR YOU

with more than 100 OPTIONS available it is easy to customized your Chillers



SBS/SBSF SERIES
SBSF-OPT SERIES
94kW ÷ 1288kW

SBS-MC SERIES
95kW ÷ 180kW

NOVA/NOVAF SERIES
266kW ÷ 2136kW

DTS/DTSF SERIES
ISV-ISVF SERIES
266kW ÷ 2136kW



EWB SERIES
291kW ÷ 2240kW

UNTIL 3000KW



CWB SERIES
291kW ÷ 2240kW

HBS SERIES
211kW - 750kW

TFW SERIES
250kW ÷ 3000kW

TFV/TFVF SERIES
250kW ÷ 1215kW

PRP/HPRP SERIES
130kW ÷ 520kW
55kW ÷ 330kW

HYD SERIES
400L ÷ 5000L

AVAILABLE TOOLS: price list - configurator - selection software

OUR GREEN APPROACH

Environmental sustainability and high energy efficiency are the goals Hitema® International strive for when developing our new products. We comply with all relevant standards, and **work ethically** to protect the environment and future generations.

We truly feel responsible for the impact our behaviour has on future generations. We believe in promoting **sustainability** and **circular economy**.

We apply this vision internally throughout our Company, as we believe success depends on all individuals sharing the same mindset.

This approach, combined with market forces and standards, has helped us shape our expanded Chiller portfolio.

Our new range includes **eco-friendly refrigerants** like HFO **R1234ze**, HFC with low GWP like **R513A**, **R32**, **R454B**, **R449A** and the natural fluid **PROPANE (R290)**, but also developing the new **TURBOCOR** Series.

FACT: Choosing 1MW R1234ze (GWP=7), 384 tonCo2 saved than R134A (GWP=1430)

WE CARE ABOUT THE ENVIRONMENT

WE BUILD CHILLERS DESIGNED TO LAST

HITEMA® RENT

high quality - reliability - durability
choose your custom rental configuration



WHAT WE OFFER:

- A **complete** range of Chillers and Heat-Pumps both in standard and special configuration.
- Special configuration for rental with **lifting eyelets** available and **strong mainframe** for the handling of the machines.
- High **efficiency** solutions.
- Packaged **Coaxial Evaporator** thickness 0,7 mm available until 200kW or Shell and tube evaporator thickness 0,7 mm.
- A wide range of **customized** applications.
- Dedicated **Hydro-Module** manufactured by Hitema available for rental. Expert technical and after sales support which will help you, proposing the most suitable solution to meet your needs.



HITEMA® FAT TEST AREA

All of the equipment we produce are personally tested one by one by our skilled Test engineers.

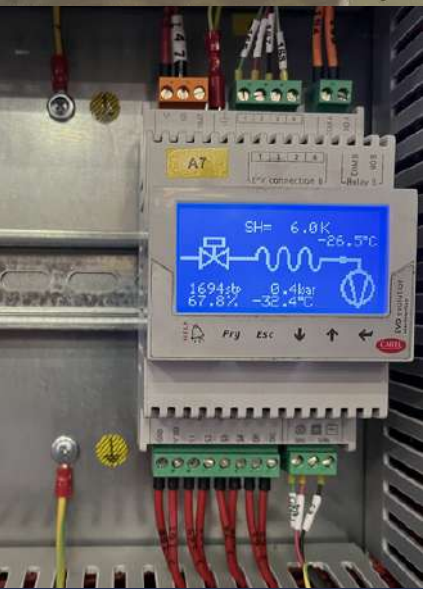
Prior to shipment we check and ensure that the Units run perfectly from day one so that our Customers can receive the highest level of quality from our machines.

Due to our philosophy of continuous improvement we can ensure that our systems have fewer issues than any other manufacturer on the market. We even offer remote FAT testing on all our Chillers if required.

Our commitment to quality and Customer Service drives increased time between component failures.

Our year on year drive to reduce downtime and increase reliability is key to our success.

"Our customers, in real time, can attend their Chiller Test".



Sensor Name	Legend Name	Sensor Value	Alarm	Unit	Water probe
Probe 1	T1 - LWT	44.8	OK	°C	OK
Probe 2	T2 - LWT	8.8	OK	°C	OK
Probe 3	T1 - HWT		OK	°C	OK
Probe 4	Probe 4		OK	°C	OK
Probe 5	Probe 5		OK	°C	OK
Probe 6	Probe 6		OK	°C	OK

Cooling Capacity: 43.41 kW

Water Flow: 1 m³/h

Temperature (°C): 20, 25, 30

Time (s): 0, 100, 200, 300

Cooling Capacity (kW): 0, 20, 40

Time (s): 0, 100, 200, 300

HITEMA international



LOOKING TOGETHER TO THE FUTURE

HITEMA TURBOCOR CHILLERS

MAIN FEATURES:

- Intelligent Controls **Optimize Energy**;
- Air to Liquid **Free Cooling** Coils;
- Oil Free **Turbocor** Compressors;
- **EC** type Fans to reduce power consumption and noise;
- **Optimized** Hybrid Cooling System;
- Very **Fast Payback**;
- **Quick Start** Function achieves full load after a power loss in few minutes;
- Optimized **Flooded Evaporator**;
- Small Footprint;
- Safety Class **A2L**;
- Eco-Friendly Refrigerant **R1234ze** (GWP = 3) available;
- **V-Shape** Condenser;
- **Economizer** to increase compressor efficiency.

Advanced Thermal Management



Flooded Evaporator Oil-Free Centrifugal Compressors Air-Cooled/Freecooling Chillers specifically designed for **Data Center** Application

AVAILABLE OPTIONS:

- Total **Custom** Engineering;
- **Up to +25°C** Leaving Water Temperature.

AVAILABLE TOOLS:

- Products **Configurator**;
- Very **Fast Offer**;
- Updated **Price List**;
- **Selection Tool** available.

"More than 32 years of experience worldwide driven by innovation"

Discover Hitema®
customized Applications

- Medical Chillers
- HVAC Chillers
- Data Center Chillers
- Pharmaceutical Solutions
- Explosion-Proof Chillers
- Winery Chillers & Heat-Pumps
- Meat Processing Chillers

- Digital Printing Chillers
- Hydraulic Cooling Solutions
- Welding Machines Chillers
- Laser Processing Chillers
- Metal Finishing Chillers
- Food Processing Chillers
- Chemical Processing Chillers

Available Options:
Total customization

HITEMA®
international



HiTEMA[®]

international

HITEMA INTERNATIONAL S.R.L.

HEADQUARTER:

Via Mons. G. Babolin, 14 - Z.I. San Gabriele
35024 - Bovolenta - Padova (ITALY)
Telephone: 0039 0495386344

CONTACT US!

Managing Director - burbam@hitema.it
customer.care@hitema.it

hitema.com



Follow us on Social Network.
Let's Connect!

» WELCOME TO
Sustainability in action



COME AND VISIT US!

8 PRODUCTION PLANTS
18.750 sqm INDOOR SPACE