

we create connections

Mission

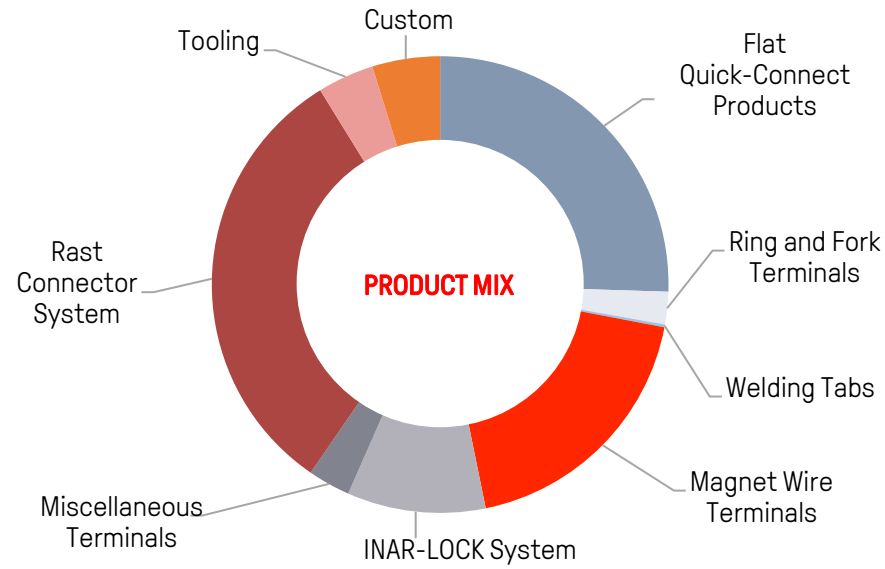
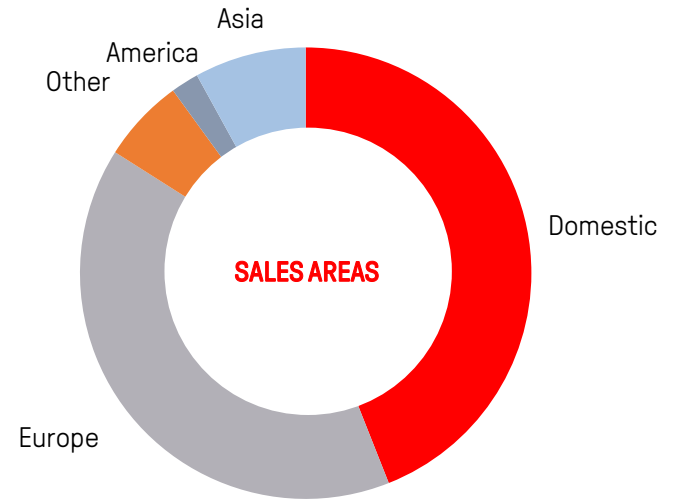
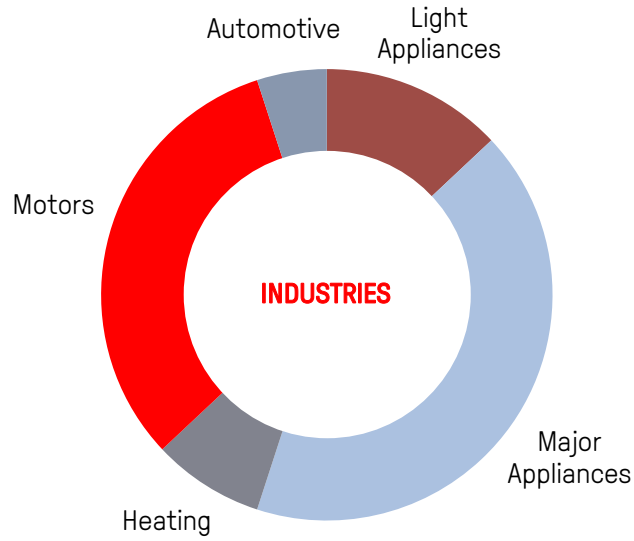
Since **1964** we design and develop terminals, connectors, connection technologies and machines for electric connections. All processes are implemented internally by a continuous innovation in order to guarantee the quality of our products and the growth of know-how.

Our commitment is always addressed to face and solve our customers' needs in order to propose them *solutions* and not simple products. We invest on average more than **10%** of our turnover in new products and technologies. We believe in innovation.



Key facts

Uncovered surface:	35.804 m ²
Covered surface:	18.500 m ²
Employed people:	130
Revenues from sales and services:	40.070.969 €
Employee training:	19.000 h
Patents:	200+





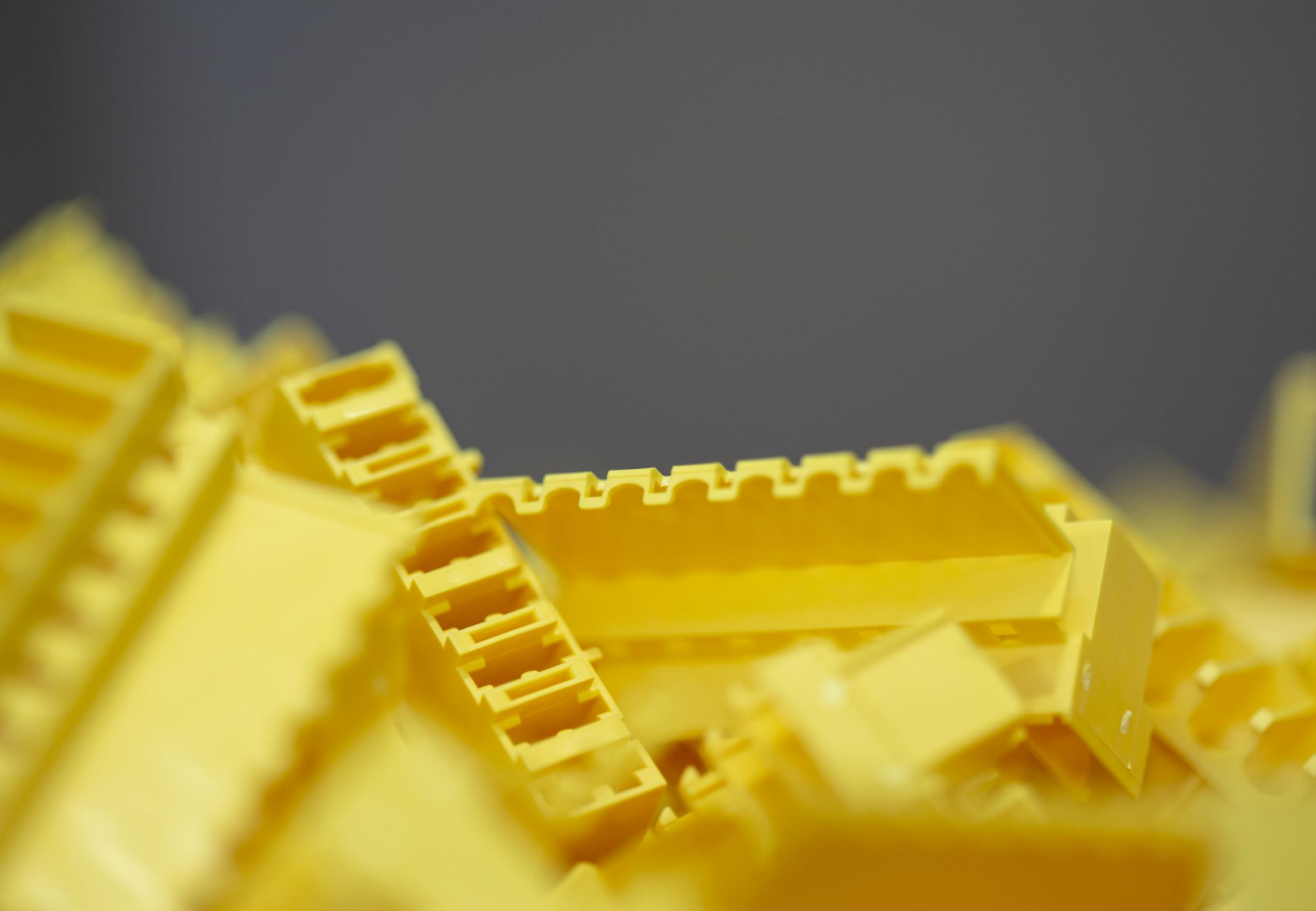
Products

- Tab and Receptacles terminals and connectors
- Eyelet and fork terminals
- Tab and solder terminals
- INAR-SPLICE and SPLICE VAR Terminals and Connectors for Magnet Wire
- Terminals and Connectors for special applications
- INAR-RS technology Terminals and Connectors for Magnet Wire
- INAR-RS MATE technology Terminals and Connectors for Magnet Wire
- INAR-MINILOCK terminals and connectors for multiple connections
- INAR-LOCK terminals and connectors for multiple connections
- INAR-EDGE terminals and connectors for Wire to Board applications
- INAR-TC terminals and connectors for Rast 5
- INAR-SAFETY security terminals and connectors
- INAR-LIF terminals and connectors Low Insertion Force
- INAR-IDC insulation displacement connectors
- Application tooling



The quality manifesto

- Continuous improvement toward perfection
- Design implementation
- Top quality raw material
- High quality tools workshop
- High quality production process
- 100% checking with optical system on the production line
- Years of know-how and high expertise level
- Target: **No defects!**



Quality Certifications

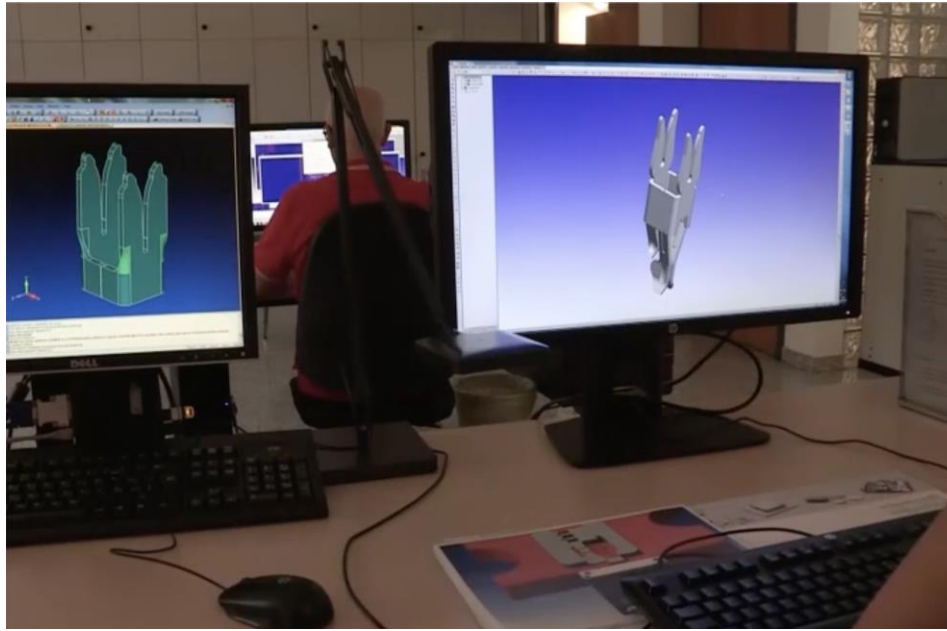
- In 1994 the Company achieved ISO 9001 certification
- In 2006 the Company is ISO 14001 certified
- In 2015 the Company obtained ISO/TS 16949 (now IATF 16949) standard
- Many Inarca product have been certified from International Organizations such as:
UL (U.S.A.), VDE (Germany), CSA (Canada).

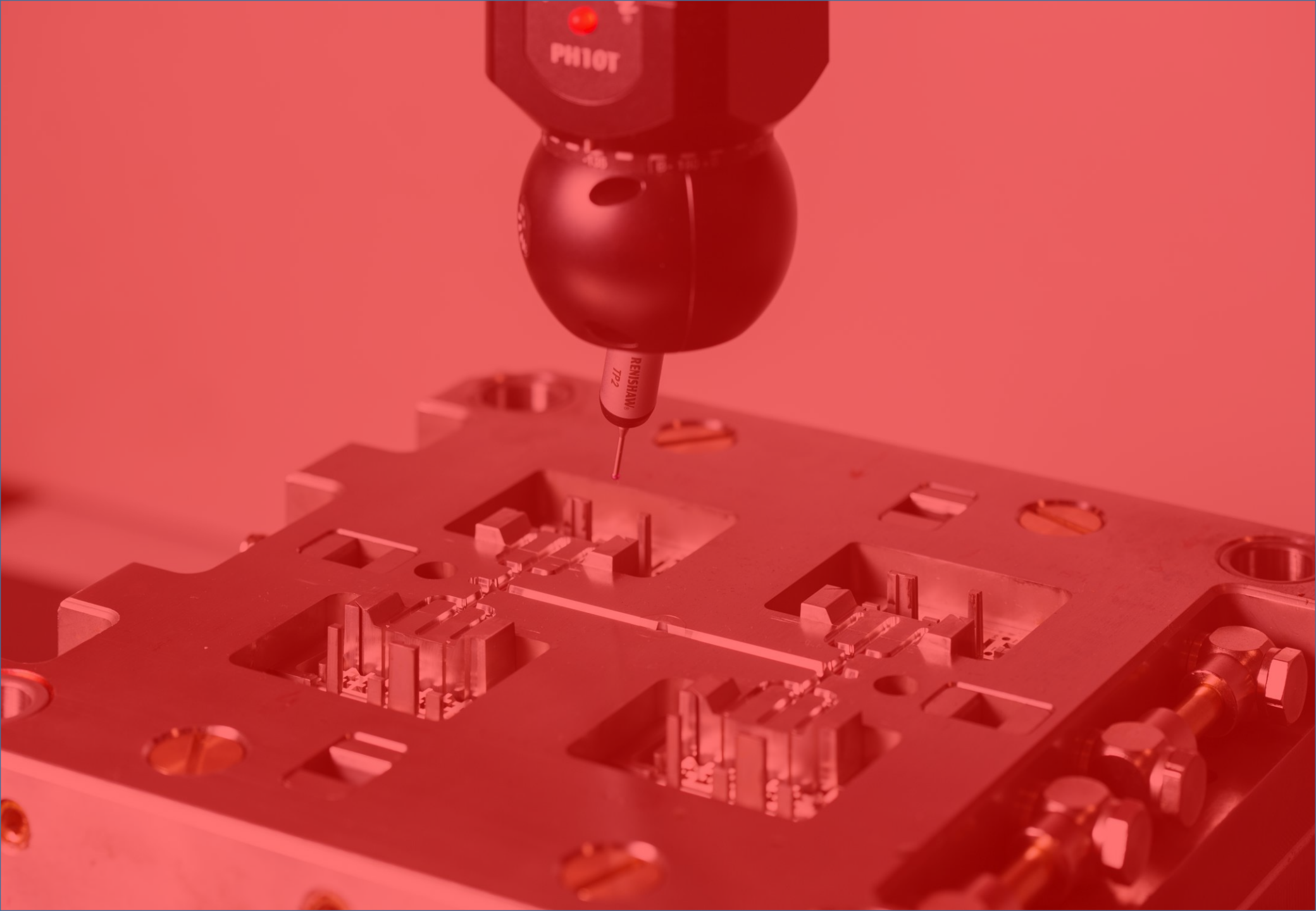
Departments

1. Research & Development
2. Tooling workshop
3. Stamping
4. Moulding
5. Galvanic and plating
6. Laboratory and controls
7. Warehouse

Research & Development

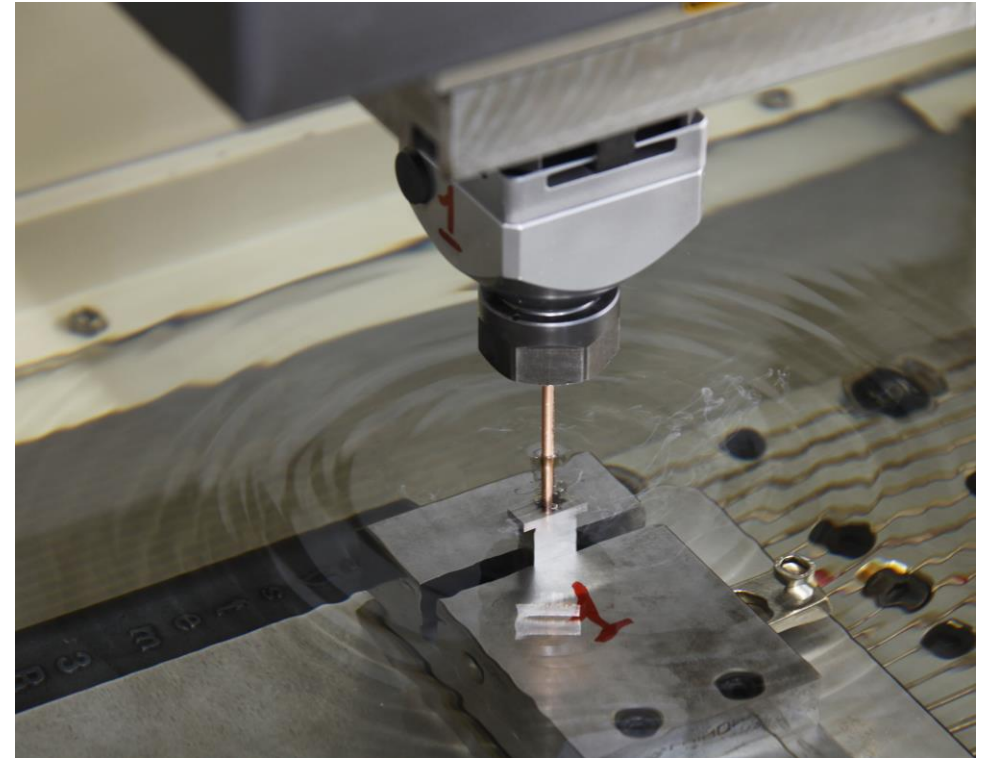
A team of experts and professional engineers.
Their mission is to improve products, develop new product lines
and assist our customers in new projects.





Tooling workshop

We manufacture all tools ourselves (dies, moulds and machine components) with a significative advantage in term of control, customization, quality and performance.



Stamping

All the progressive dies are internally fabricated and all the lines works with Bruderer presses. The optical control system and the full automation, guarantees incomparable final results.





Moulding

The plastic moulds are manufactured in Inarca and all the press machines are power supplied. The production is automated with a latest injection technologies system.



Galvanic and Plating

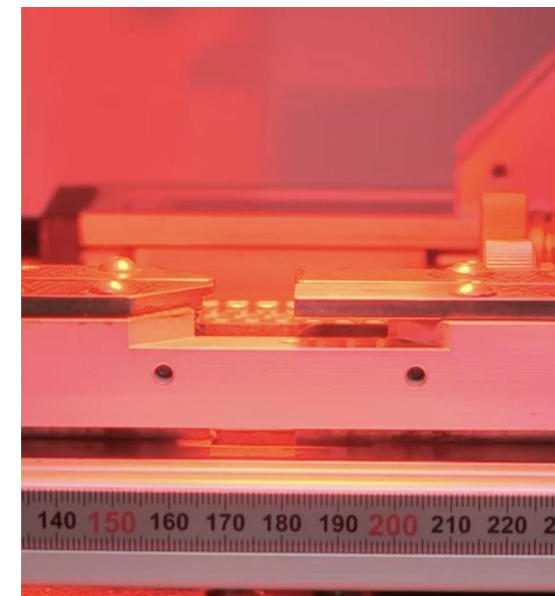
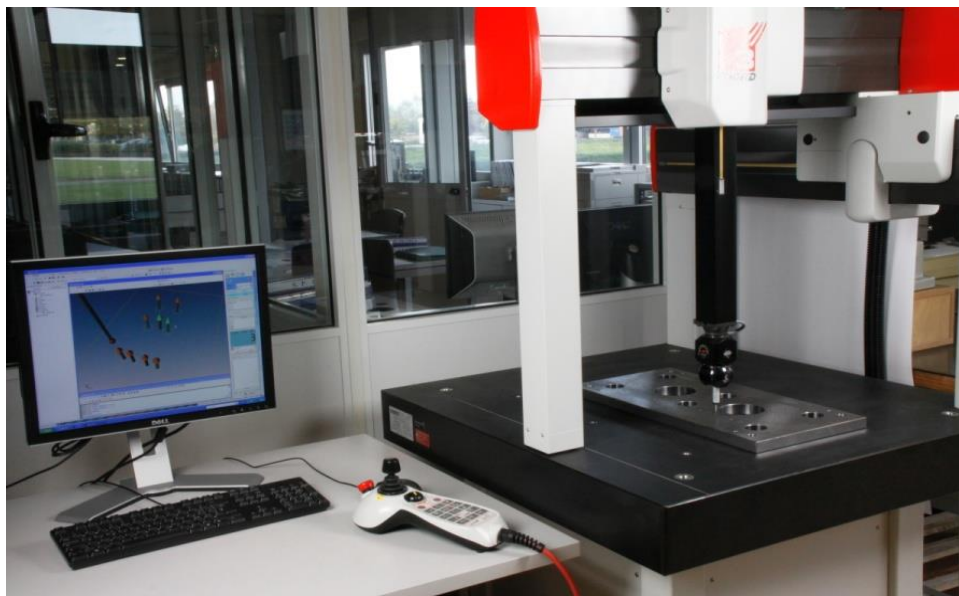
Internal Galvanic and Plating departments are the logical sequence in stamping production. These systems work respecting the environment. Sustainability has always been a priority for us.





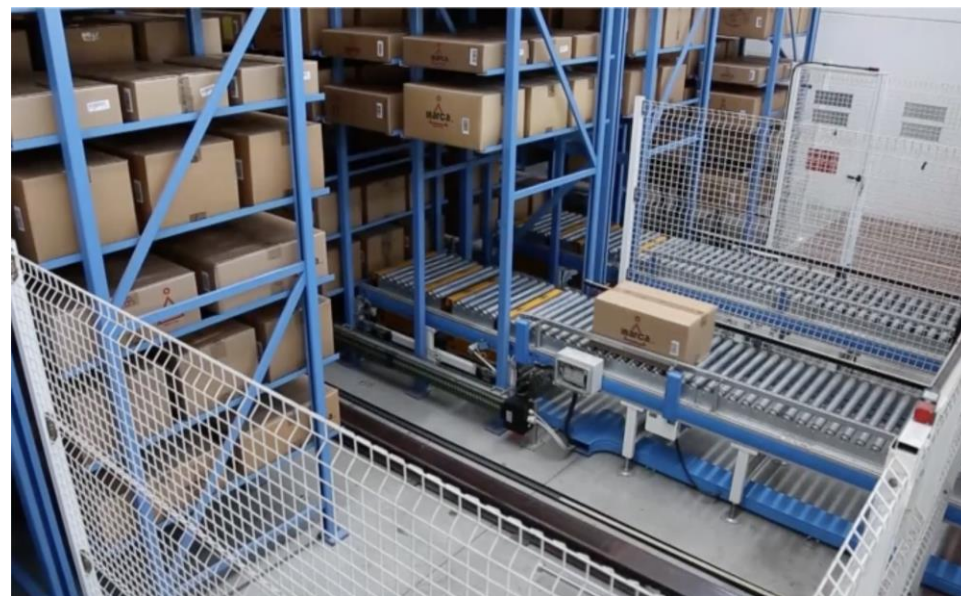
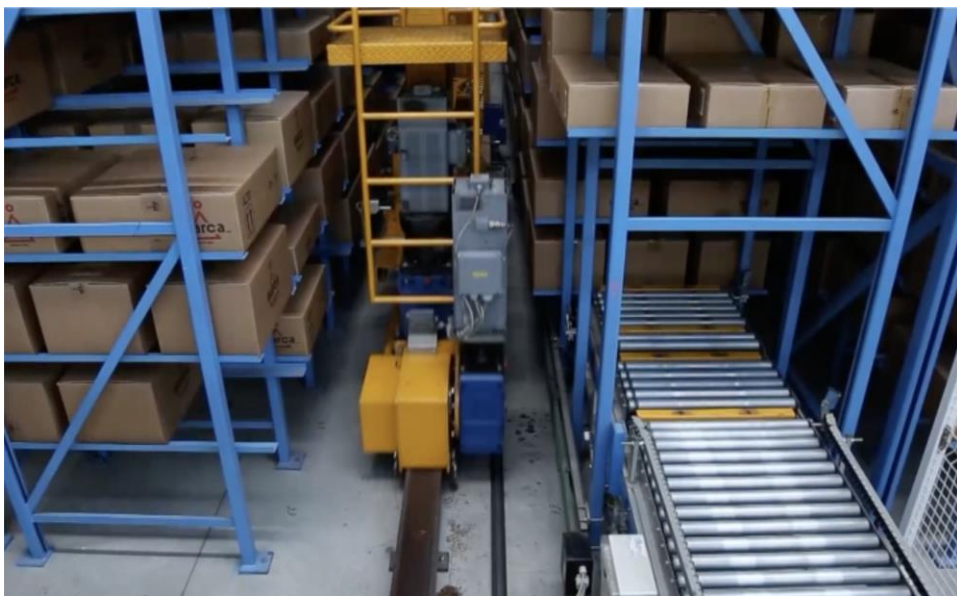
Laboratory and Controls

Strict procedures of quality controls with a full range of tools and many years of experience. We care about quality.

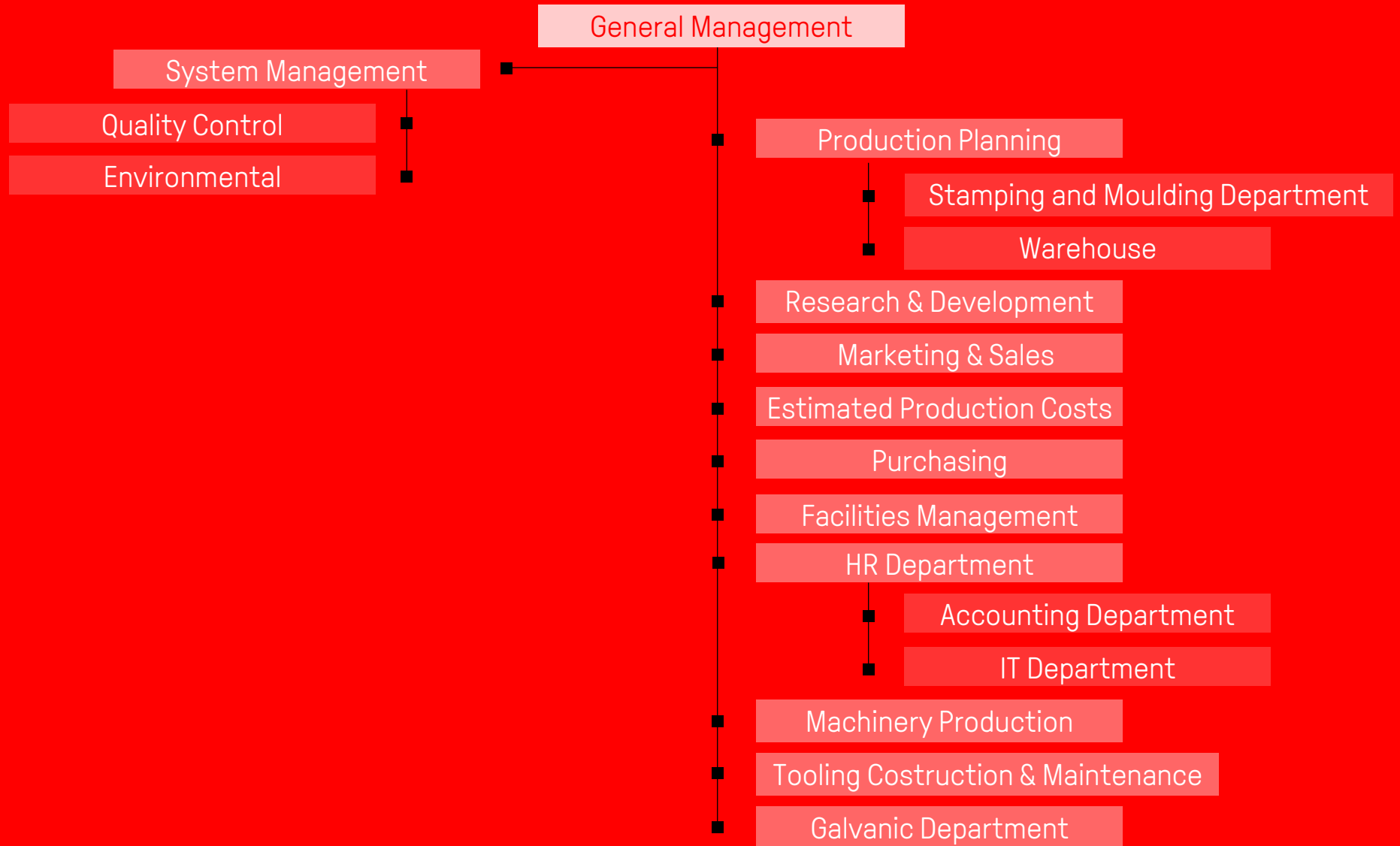


Warehouse

The logistic department is fully automatized.
This system has allowed us to minimize space and time
and maximize the delivery process.



Organization chart



Some Of Our Customers

AEG Electrolux

Ariston Thermo

Amica

Ametek

Askoll

Baxi

Becker

Bitron

BDR Thermea

Black & Decker

Bontanz-Centre

Borg Warner

B/S/H

Candy

Carel

Copreci

Came

DAB

DeLonghi

Denso

Domel

Ducati Energia SPA

EBM PAPST

Electrolux

Elica

Eliwell

Embraco

Emerson

Faber

Franke

Gorenje

Hidria

Hoover

Immergas

Intorq

ITT

Johnson Motors

Kärcher

Kemet

Kendrion

LEM

Lexy - Kingclean

Liebherr

Logicdata

Mabuchi

Magna

Mahle

Mes

Miele

Nidec Global Appliance

Nidec Motors & Actuators

Nidec GPM

Pedrollo

Pentair

Peg Perego

Quooker

Rosenberg

Robert Shaw

Robert Bosch

Saeco

Sanhua Aweco

Sew Usocome

Secop

Siemens

Sisme

Silanos

SKF

Smeg

Somfy

Sonceboz

Taco

Unox

Vaillant

Viessmann

Vortice

Vorwerk

Wahl Clipper

Whirlpool

Xylem

Zoppas Industries

Thank you.